



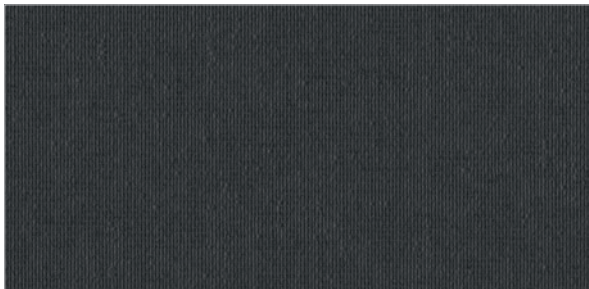
SCREEN
DIMOUT
BLACKOUT
ALUMINIUM
ACOUSTIC
MEDI CARE
FACADE

0%

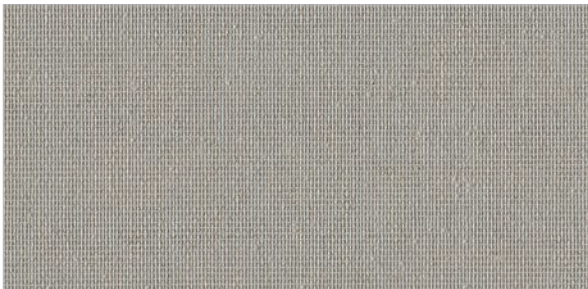
Starlet Blackout Color Upcycling

Starlet Blackout Color Upcycling

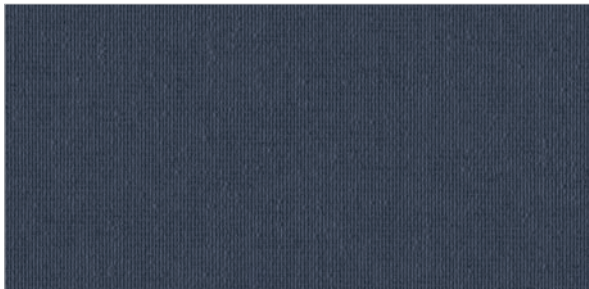
0%



5832 Midnight Black



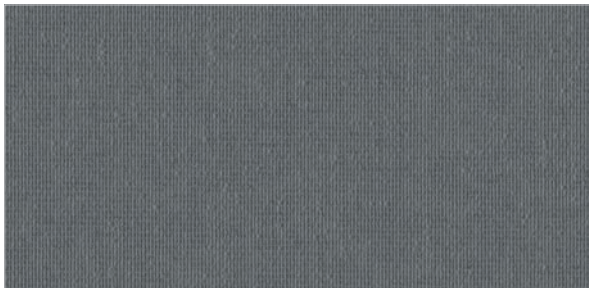
10331 Stone



7628* Night Blue



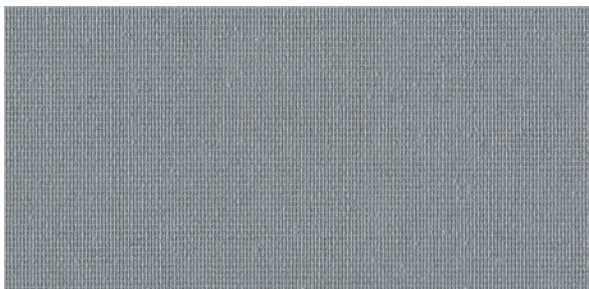
4899 Perfect Greige



6625 New York Grey



6117 Cream



5770 French Grey



4898 Snow



5108 Grey Haze

Starlet Blackout Color Upcycling

0%



PVC-free



very good night privacy



very good glare control



colour-matching foam backing

colour	optical factors										thermal factors					
	fabric					R _a	classification				fabric				fabric + glazing	
	visible light (%)						glare control	night privacy	visual contact	daylight utilisation	solar radiation (%)			glazing D _{g=0,32 U_g=1,1}		
T _v	R _v	A _v	T _{v,n-n}	T _{v,n-dif}	T _s	R _s	A _s	T _{uv}	g _{tot}	class						
4898	0	74	26	0,0	0,0	87	4	4	0	0	0	66	34	0	0,25	2
4899	0	67	33	0,0	0,0	48	4	4	0	0	0	63	37	0	0,25	2
5108	0	56	44	0,0	0,0	29	4	4	0	0	0	51	49	0	0,26	2
5770	0	38	62	0,0	0,0	89	4	4	0	0	0	38	62	0	0,27	2
5832	0	6	94	0,0	0,0	61	4	4	0	0	0	6	94	0	0,30	2
6117	0	73	27	0,0	0,0	86	4	4	0	0	0	64	36	0	0,25	2
6625	0	19	81	0,0	0,0	89	4	4	0	0	0	17	83	0	0,29	2
7628	0	6	94	0,0	0,0	73	4	4	0	0	0	8	92	0	0,30	2
10331	0	47	53	0,0	0,0	91	4	4	0	0	0	44	56	0	0,27	2

Data is measured according to EN 410:2011 and EN 14500:2021. Calculations of g_{tot} are defined according to EN ISO 52022-1:2017 using solar control double glazing type D (g=0,32; U_g=1,1). Other glazing types can be calculated on request.

Classifications: 0 (very little effect), 1 (little effect), 2 (moderate effect), 3 (good effect) and 4 (very good effect) refer to EN 14501:2021.

* colour 7628 is not available in 305 cm / 120", 89 mm / 3,5" and 127 mm / 5"



UP cycling



- ✓ min. 80 % recycled post-consumer polyester (PET - plastic waste)
- ✓ sustainable
- ✓ saves fossil resources

This information refers to our Starlet Blackout Color Upcycling fabrics in widths of 240 cm / 94", 89 mm / 3,5" and 127 mm / 5". It does not refer to Starlet Blackout Color in width of 305 cm / 120".

Starlet Blackout Color Upcycling 0%



Article		40985	40989	70721	70821
Width		240 cm / 94"	305 cm / 120"	89 mm / 3,5"	127 mm / 5"
Base material		min. 80 % recycled polyester	100 % polyester	min. 80 % recycled polyester	min. 80 % recycled polyester
Weight approx.	EN 12127	325 g/m ² / 9,6 oz/yd ²	325 g/m ² - 365 g/m ² 9,6 oz/yd ² - 10,8 oz/yd ²	325 g/m ² / 9,6 oz/yd ²	325 g/m ² / 9,6 oz/yd ²
Thickness approx.	EN ISO 5084	0,44 mm / 0,017"	0,40 mm - 0,44 mm 0,016" - 0,017"	0,44 mm / 0,017"	0,44 mm / 0,017"
Openness factor OF	EN 14500	0 %	0 %	0 %	0 %
Flame retardancy		B1 / M1 / C1 / NFPA 701 / California U.S. Title 19			
Sound absorption	EN ISO 10534-2	$\alpha_w = 0,20$	$\alpha_w = 0,20$	$\alpha_w = 0,20$	$\alpha_w = 0,20$
Light fastness (window side)	EN ISO 105-B02	min. 6	min. 6	min. 6	min. 6
Tensile properties: Determination of max. force Elongation at max. force	EN ISO 13934-1	warp: > 80 daN - weft: > 45 daN warp: approx. 13 % - weft: approx. 18 %			
Suitable for moist atmosphere		yes	yes	yes	yes
Manufacturing guidance		to cut with cold knife		weldable by heat, parameters to be tested in advance (e.g. 120°C, 4 bar, 5 sec)	
Roll length approx.		30 m / 33 yd	30 m / 33 yd	100 m / 109 yd	100 m / 109 yd
Care instruction		spongeable	spongeable	spongeable	spongeable

The information provided in this document do not exempt processors from carrying out own tests and trials as further handling and processing may show significant effects on our products. Application, utilization and processing of products are beyond our control and are therefore the sole responsibility of the processors.

All specifications are based on current knowledge and experience. They are based on average values and may deviate within the standard tolerance limits. Subject to technical modifications.

Product certificates and guarantees



REACH
compliant



** refers to 40985, 70721, 70821

1523

made in Germany

1523