



SCREEN
DIMOUT
BLACKOUT
ALUMINIUM
ACOUSTIC
MEDI CARE
FACADE

0%

Starlet Upcycling
Starflex Upcycling

Starlet Upcycling

Starflex Upcycling

0%



PVC-free



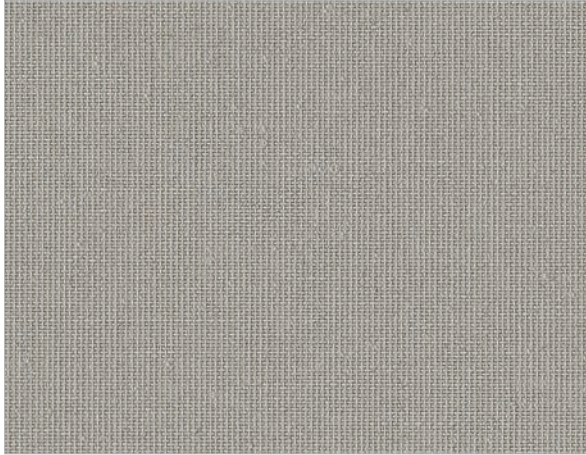
very good glare control



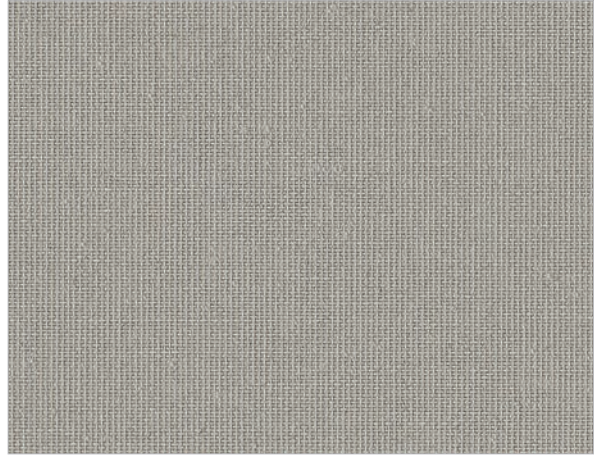
wide colour range



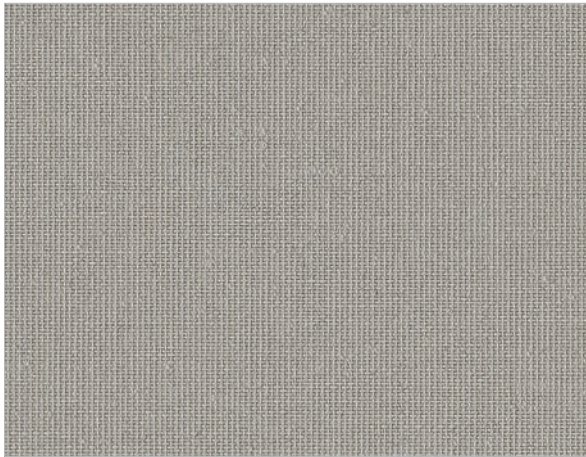
very good night privacy



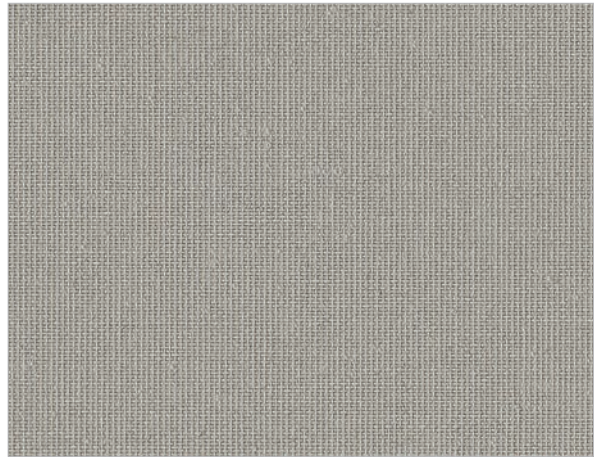
STARLET UPCYCLING
40818 / 04-2064-3100
70537 / 70637



STARLET MEDI CARE UPCYCLING
40981
70719 / 70819



STARLET DIMOUT UPCYCLING
40823
70564 / 70664



STARFLEX DIMOUT UPCYCLING
40822
70547 / 70647



UP
cycling



min. 80 % recycled post-consumer polyester
(PET - plastic waste)












































sustainable































saves fossil resources

		4898	6117	4899	10331	7616	5108	5770	6625	90010	5832	10328	10327	10326	10330	10329	7628
		Snow	Cream	Perfect Greige	Stone	Chocolate	Grey Haze	French Grey	New York Grey	Charcoal	Midnight Black	Classic Red	Mandarine	Canary	Rural Green	Royal Blue	Night Blue











Starlet Upcycling

B1 M1 C1 NFPA	40818 240 cm																
	04-2064-3100 310 cm																
	70537 / 70637 89 mm / 127 mm																

















Starlet Medi Care Upcycling

B1 M1	40981 240 cm																
	70719 / 70819 89 mm / 127 mm																

Starlet Dimout Upcycling

B1	40823 240 cm																
	70564 / 70664 89 mm / 127 mm																

Starflex Dimout Upcycling

B1	40822 240 cm																
	70547 / 70647 89 mm / 127 mm																

optical factors											thermal factors					
colour	fabric						classification				fabric				fabric + glazing	
	visible light (%)					R _G	glare control	night privacy	visual contact	daylight utilisation	solar radiation (%)				glazing D g=0,32 Ug=1,1	
	T _v	R _v	A _v	T _{v,n-n}	T _{v,n-dif}						T _s	R _s	A _s	T _{UV}	g _{tot}	class
Starlet Upcycling																
4898	14	75	11	0,1	13,9	91	3	3	0	2	17	70	13	0	0,25	2
4899	6	63	31	0,0	6,3	66	4	3	0	1	10	58	32	0	0,26	2
5108	4	50	46	0,0	3,5	83	4	4	0	1	6	47	47	0	0,27	2
5770	1	37	62	0,0	1,0	86	4	4	0	0	2	35	63	0	0,28	2
5832	0	6	94	0,0	0,0	50	4	4	0	0	0	6	94	0	0,30	2
6117	14	76	10	0,1	14,2	83	3	3	0	2	17	70	13	0	0,25	2
6625	0	21	79	0,0	0,1	74	4	4	0	0	0	18	82	0	0,29	2
7616	0	20	80	0,0	0,1	34	4	4	0	0	0	19	81	0	0,29	2
7628	0	7	93	0,0	0,0	35	4	4	0	0	0	11	89	0	0,30	2
10326	11	67	22	0,0	10,5	19	3	3	0	1	15	62	23	0	0,25	2
10327	6	46	48	0,0	5,8	0	4	3	0	1	15	56	29	0	0,26	2
10328	1	17	82	0,0	0,9	0	4	4	0	0	11	47	42	0	0,27	2
10329	0	12	88	0,0	0,0	0	4	4	0	0	9	38	53	0	0,28	2
10330	1	29	70	0,0	0,5	0	4	4	0	0	9	44	47	0	0,27	2
10331	2	41	57	0,0	1,9	61	4	4	0	1	4	40	56	0	0,27	2
90010	0	10	90	0,0	0,0	79	4	4	0	0	0	10	90	0	0,30	2
Starlet Medi Care Upcycling																
4898	14	75	11	0,1	13,9	91	3	3	0	2	17	70	13	0	0,25	2
4899	6	63	31	0,0	6,3	66	4	3	0	1	10	58	32	0	0,26	2
5108	4	50	46	0,0	3,5	83	4	4	0	1	6	47	47	0	0,27	2
5770	1	37	62	0,0	1,0	86	4	4	0	0	2	35	63	0	0,28	2
5832	0	7	93	0,0	0,0	49	4	4	0	0	0	7	93	0	0,30	2
6117	14	76	10	0,1	14,2	83	3	3	0	2	17	70	13	0	0,25	2
6625	0	21	79	0,0	0,1	74	4	4	0	0	0	19	81	0	0,29	2
7616	0	20	80	0,0	0,1	34	4	4	0	0	0	20	80	0	0,29	2
10326	11	67	22	0,1	10,9	19	3	3	0	2	15	62	23	0	0,25	2
10327	4	45	51	0,0	3,6	0	4	4	0	1	13	57	30	0	0,26	2
10328	1	17	82	0,0	0,9	0	4	4	0	0	11	47	42	0	0,27	2
10329	0	12	88	0,0	0,0	0	4	4	0	0	9	38	53	0	0,28	2
10330	1	29	70	0,0	0,5	0	4	4	0	0	9	44	47	0	0,27	2
10331	2	44	54	0,0	2,3	64	4	4	0	1	4	42	54	0	0,27	2
Starlet Dimout Upcycling																
4898	5	79	16	0,0	5,2	86	4	3	0	1	8	73	19	0	0,24	2
4899	3	79	18	0,0	2,9	70	4	4	0	1	5	72	23	0	0,24	2
5108	3	78	19	0,0	3,1	85	4	4	0	1	5	73	22	0	0,24	2
5770	1	78	21	0,0	1,0	81	4	4	0	0	2	71	27	0	0,24	2
6117	6	76	18	0,0	5,9	81	4	3	0	1	8	71	21	0	0,25	2
Starflex Dimout Upcycling																
4898	5	82	13	0,0	5,3	85	4	3	0	1	7	77	16	0	0,24	2
4899	2	81	17	0,0	2,2	67	4	4	0	1	5	75	20	0	0,24	2
5108	2	78	20	0,0	1,8	77	4	4	0	1	3	73	24	0	0,24	2
5770	1	80	19	0,0	1,1	80	4	4	0	0	2	73	25	0	0,24	2
6117	4	81	15	0,0	3,7	72	4	4	0	1	6	75	19	0	0,24	2
6625	0	81	19	0,0	0,2	71	4	4	0	0	1	73	26	0	0,24	2
7616	0	81	19	0,0	0,3	46	4	4	0	0	1	74	25	0	0,24	2
10331	1	81	18	0,0	1,3	66	4	4	0	0	3	76	21	0	0,24	2



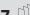


Data is measured according to EN 410:2011 and EN 14500:2021. Calculations of g_{tot} are defined according to EN ISO 52022-1:2017 using solar control double glazing type D (g=0,32; U_g=1,1). Other glazing types can be calculated on request.

Classifications: 0 (very little effect), 1 (little effect), 2 (moderate effect), 3 (good effect) and 4 (very good effect) refer to EN 14501:2021.





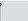

Starlet Upcycling 0%

Starlet Medi Care* Upcycling 0%

Article		40818 	04-2064-3100 	70537 / 70637 	40981 	70719 / 70819 
Width		240 cm / 94"	310 cm / 122"	89 mm / 3,5" 127 mm / 5"	240 cm / 94"	89 mm / 3,5" 127 mm / 5"
Base material	min. 80 % recycled polyester				min. 80 % recycled polyester	
Weight approx.	EN 12127	215 g/m² / 6,3 oz/yd²			215 g/m² / 6,3 oz/yd²	
Thickness approx.	EN ISO 5084	0,37 mm / 0,015"			0,37 mm / 0,015"	
Openness factor OF	EN 14500	0 %			0 %	
Flame retardancy	B1 / M1 / C1 / NFPA 701				B1 / M1	
Sound absorption	EN ISO 10534-2	α _w = 0,30			α _w = 0,30	
Light fastness (window side)	EN ISO 105-B02	min. 5-6			min. 5-6	
Tensile properties: Determination of max. force Elongation at max. force	EN ISO 13934-1	warp: > 70 daN - weft: > 45 daN warp: approx.13 % - weft: approx.18 %			warp: > 70 daN - weft: > 45 daN warp: approx.13 % - weft: approx.18 %	
Suitable for moist atmosphere	yes				yes	
Manufacturing guidance		to cut with cold knife		conditionally weldable**, welding agent recommended	to cut with cold knife	conditionally weldable**, welding agent recommended
Roll length approx.		42 m / 46 yd		200 m / 219 yd	42 m / 46 yd	200 m / 219 yd
Care instruction		spongeable			spongeable	

Starlet Dimout Upcycling 0%

Starflex Dimout Upcycling 0%

Article		40823 	70564 / 70664 	40822 	70547 / 70647 
Width		240 cm / 94"	89 mm / 3,5" 127 mm / 5"	240 cm / 94"	89 mm / 3,5" 127 mm / 5"
Base material		min. 80 % recycled polyester		min. 80 % recycled polyester	
Weight approx.	EN 12127	240 g/m² / 7,1 oz/yd²		250 g/m² / 7,4 oz/yd²	
Thickness approx.	EN ISO 5084	0,37 mm / 0,015"		0,38 mm / 0,015"	
Openness factor OF	EN 14500	0 %		0 %	
Flame retardancy		B1		B1	
Sound absorption	EN ISO 10534-2	α _w = 0,20		α _w = 0,20	
Light fastness (window side)	EN ISO 105-B02	min. 6		min. 6	
Tensile properties: Determination of max. force Elongation at max. force	EN ISO 13934-1	warp: > 80 daN - weft: > 45 daN warp: approx.13 % - weft: approx.18 %		warp: > 80 daN - weft: > 45 daN warp: approx.13 % - weft: approx.18 %	
Suitable for moist atmosphere		yes		yes	
Manufacturing guidance		to cut with cold knife	conditionally weldable**, welding agent recommended	to cut with cold knife	welding agent recommended**
Roll length approx.		32 m / 35 yd	150 m / 164 yd	32 m / 35 yd	150 m / 164 yd
Care instruction		spongeable		spongeable	

* Testing of antimicrobial activity in accordance with ASTM E 2149. Fabric contains antimicrobial agent: Silverchloride. This refers to Starlet Medi Care Upcycling (all colours) and Starlet Upcycling (colours 10326, 10327, 10328, 10329, 10330)

** welding parameters must be tested in advance.

DISCLAIMER

This documentation was created to the best of our knowledge. It does not absolve the processor from examination for compliance with official rules and regulations. For products treated with approved biocidal active substances, the Biocidal Products Regulation 528/2012, regarding the provision on the market and the use of biocidal products within the European Union, must be regarded. Therefore, the person placing the products on the market is responsible to ensure that they are labeled in conformity. Information is available at: www.reach-clp-biozid-helpdesk.de. Outside the European Union, for example for the US and Canadian markets, there may be different requirements that must be observed by dealers, processors and distributors. Junkers & Müllers GmbH assures the application of active biocidal substances approved only in the EU. The products are sold as „treated goods“ and as such are not subject to authorization. Inappropriate, incomplete or even health-related claims and statements can result in mandatory registration as a medical product.

The information provided in this document do not exempt processors from carrying out own tests and trials as further handling and processing may show significant effects on our products. Application, utilization and processing of products are beyond our control and are therefore the sole responsibility of the processors.

All specifications are based on current knowledge and experience. They are based on average values and may deviate within the standard tolerance limits. Subject to technical modifications.

Product certificates and guarantees

Sustainable building certificates

All JM fabrics certified according to SCS Advantage™ Gold can contribute to credits in sustainable building certifications, such as DGNB, BREEAM and LEED.

